

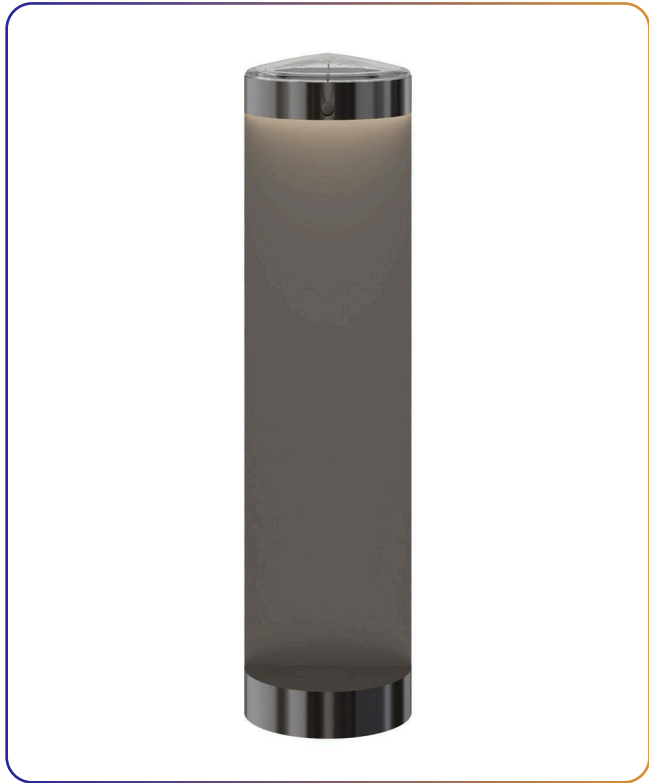
**BULLARD
SOLAR**
One with the Sun

BOLITE SOLAR BOLLARD



FIXTURE TYPE: _____

PROJECT NAME: _____



GENERAL INFORMATION:

The Bolite Solar Bollard by Bullard Solar is a sleek, self-sustaining outdoor lighting fixture powered entirely by solar energy—no wiring required. Designed with a modern aluminum and polycarbonate body, it features optional wood paneling for a refined architectural look. Engineered for durability and energy efficiency, Bolite provides reliable illumination for pathways, landscapes, and exterior spaces while maintaining a clean, contemporary aesthetic.

FIXTURE TYPE

Solar Bollard

VOLTAGE:

12-24V DC

12-24V

MATERIAL:

304 Stainless Steel

IP RATING:

IP 65

IP65

APPLIANCE CLASS:

II



DRIVER POSITION:

Integral

WARRANTY:

LED lighting products are warranted for 5 years.

MAIN FEATURES:

- High visual comfort
- Wide range of finishes
- Functional design
- Minimal design
- Shock resistant
- Operating Temperature: -30°~ +50°

ONE WITH THE SUN

sales@gordonbullard.com
www.bullardsolar.com
1-877-964-4646



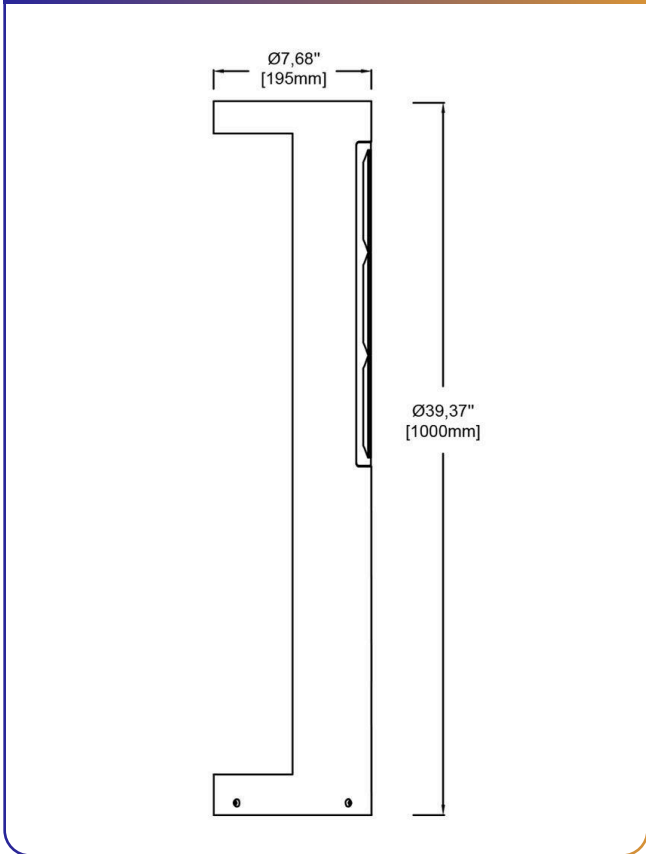
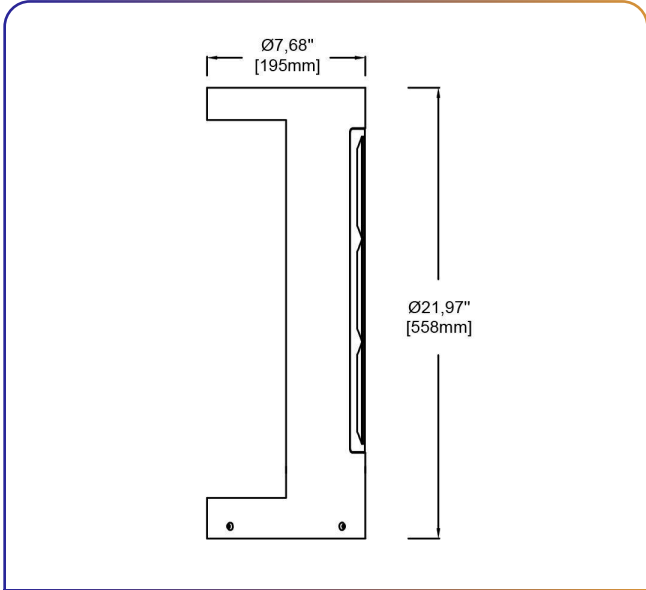
991 South Gull Lake Dr
Richland, MI 49083
USA

FIXTURE TYPE: _____

PROJECT NAME: _____

Example:
CODE: BS-BLTE-BL-H1-DIM

BS-BLTE-BL
-H1-DIM



1 HEIGHT:

-H1 Height - H: 22" (56 cm)
-H2 Height - H: 27.55" (70 cm)

2 DIAMETER:

Ø: 7,7" (19,5 cm)

3 LIGHT SOURCE:

LED / 2.5-3W / 3000K / 12-24V DC / 136 lm

4 SOLAR PANEL:

Single crystal solar photovoltaic panel
LiFePO4 Battery
Capacity 18000mAh

Back Solar Panel - 12.5W/18V
Top Solar Panel - 2W/18V

5 INFRARED SENSOR:

180° PIR Motion and day / night sensor
Input voltage: 12-24V DC
Static current: maximum 8 mA
0-10V DC output signal

6 FINISH OPTION:

Galvanic metal finishes - RAL 7047

7 DIMMING OPTIONS:

-DIM 0-10V
-NON NON - Dimmable



ONE WITH THE SUN

sales@gordonbullard.com
www.bullardsolar.com
1-877-964-4646



991 South Gull Lake Dr
Richland, MI 49083
USA